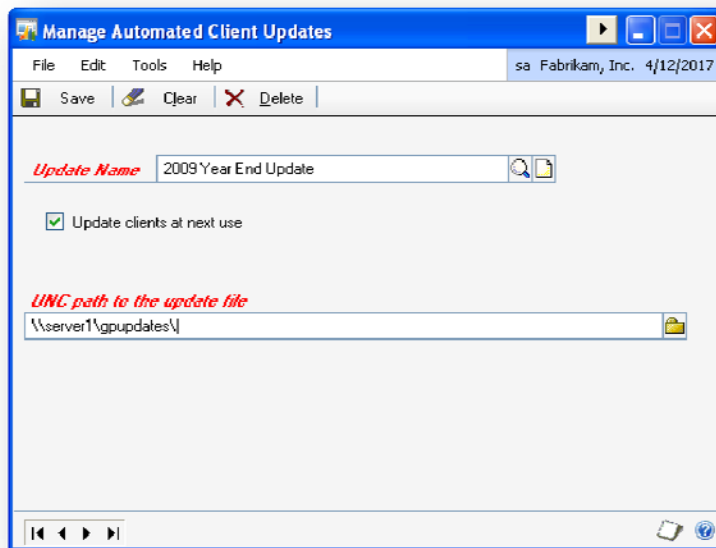
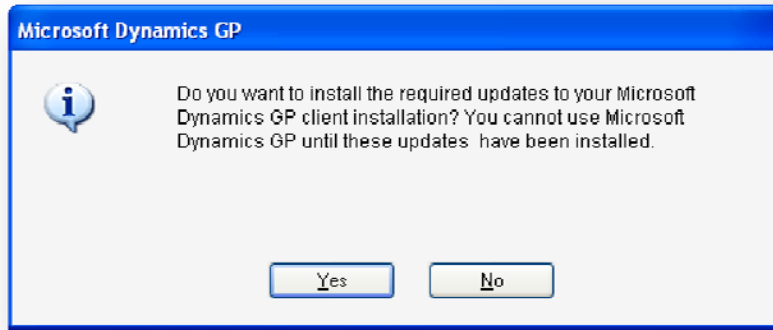


Using the Client Update to Install the Year End Update

1. Download the year-end update and place in a shared folder on the network.
2. Log into GP as a user with the system setup password.
3. Go to Microsoft Dynamics GP menu >> Tools >> Setup >> System >> Client Update
4. Enter a name for the update, like "2009 Year End Update"
5. Unmark the "Update clients at next use" checkbox if you are not ready to update the machines.
6. Enter the UNC path to the update or browse to it. A UNC path name uses the schema [\\machinename\sharedfolder](#). For example, if the server name is SERVER1 and the shared folder is GPUPDATES the UNC path might be [\\server1\gpupdates](#).



7. Save the record.
8. When you are ready to update all machines, including the server, return to the Client Update window and mark the option "Update clients as next use".
9. Close GP.
10. Open GP on the database server.
11. Log into GP.
12. Select any company at the Company Login window.
13. You will receive the following message.



14. The update will install. On the server, launch GP Utilities and update the databases.
15. On each workstation, log into GP and answer the question to install the update.
16. You may need to restart each workstation. (You probably will.)
17. There may also be a Dexterity component update that occurs when you relaunch GP and try to log into it. This will happen automatically.