

Manufacturing Order Processing

[BENEFITS]

Manage costing more effectively

Provide timely, detailed, and accurate tracking of production costs, help improve efficiency and cut costs—and increase profitability.

Define operations in greater detail

Define the manufacturing process to fit your specific operations for a tailored fit between the process and the product. Add the detail necessary for complicated operations, or simplify when the manufacturing environment is lean.

Expand operational controls

Provide greater operational controls to manage orders, routings, material requirements planning (MRP), work in process (WIP), and production costing.

Leverage and control outsourcing

By managing outsourced operations more efficiently, you can focus more profitably on core competencies. This improves your competitive standing in today's tough markets.

Integrate seamlessly to better utilize manufacturing data

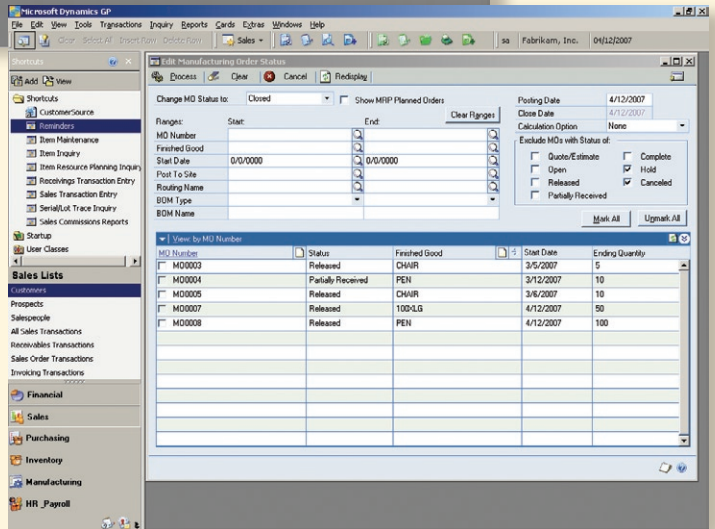
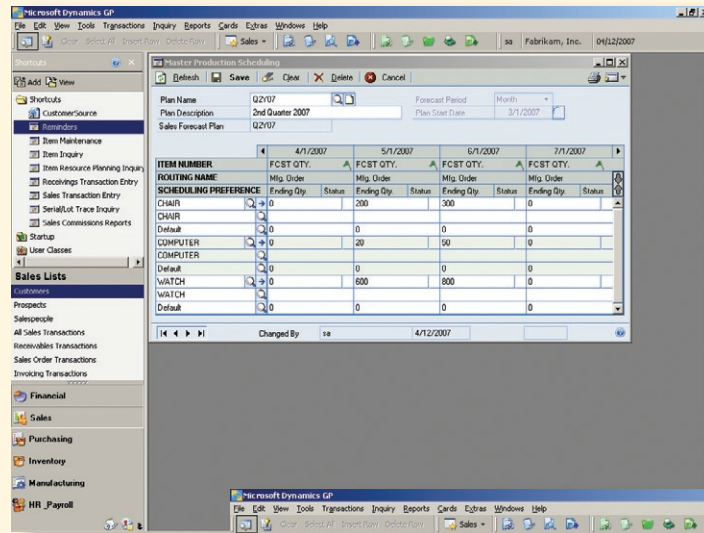
Integrated sales and production processes support flexible, efficient make-to-order environments. Integrating forecasting processes with production significantly improves planning in build to forecast or hybrid environments.

Access critical information—faster, easier, and in greater detail—for better decision making

Find the key information you need to make critical decisions with easy visibility into manufacturing orders, their progress, and associated costs.

Track detailed production costs and manage work orders, the shop floor, and even outsourced processes. By directing the entire cycle of order processing, you can build a business that is both customer-driven and profitable.

MONITOR ORDER PROGRESS with precision, addressing potential problems before they materialize.



"MASS CHANGE" THE STATUS of multiple manufacturing orders at one time.

[FEATURES OVERVIEW]

Manufacturing Orders

Quick Manufacturing Orders

Set up quick MOs and empower timely recording of production, as well as the ability to backflush materials, labor, and machine expenses.

Improved Workflow

Set up sales orders to flow easily into manufactured orders.

Precise Production Control

Define end production quantities more efficiently. Establish set-ups taking maximum and minimum quantities into account, provide alerts, and account for scrap and shrinkage.

Capacity Requirements Planning

View manufacturing orders from within CRP windows to help manage the demand for finished goods effectively.

Automated Scheduling

Calculate start and due dates automatically, based on the routing used. (If desired, or if situations indicate, dates may be entered manually.)

More Efficient Picking

Streamline picking operations and improve efficiency, by printing picking documents for a range of manufacturing orders, components, sites, and dates.

On-Demand Allocation

Allocate, issue, and scrap components as needed. Operations also can be reversed to place components back into inventory.

Visibility into Component Shortages

View a list of picklist component shortages, including details about when the items are needed for manufacturing orders, to help manage your inventory replenishment plans.

Detailed Visibility and Management of Orders

Receive full or partial manufacturing orders with actual quantities, collected labor, machine costs, and backflush levels easily viewed and tracked.

Comprehensive Variance Assessment

Track in dollars or percentages for each cost category by estimated, work-in-progress, and actual amounts. View by unit or for complete manufacturing orders.

Flexible Rescheduling

Reschedule batches for sequences in manufacturing orders to respond to unforeseen situations or delays, quickly and easily.

Automated or Direct WIP Data Entry

Enter WIP data directly into the system, or automatically integrate with many popular data collection devices.

Improved Collaboration with Outsourced Service Vendors

Generate purchase orders for outsourced services based on manufacturing orders. Track shipment details and outsourcing costs precisely.

Serial/Lot Linking

Link serial or lot tracked components to serial or lot tracked finished goods, for complete traceability throughout the system.

Mass Manufacturing Order (MO) Status Change

Change the status of Manufacturing Orders en masse, as well as turn MRP Planner Orders into Open or Released Manufacturing Orders.

Business Portal Integration

View critical manufacturing information using a Web browser from within Business Portal.

[FEATURES OVERVIEW]

Routing

As-Needed Definition

Define routings on an as-needed basis. A virtually unlimited number of routes can be assigned to items, each with a virtually unlimited number of sequences, to provide alternate routes when capacity is constrained.

Detailed Instruction Capability

Attach detailed notes to each routing sequence, providing clear direction through easy access to information designed to improve accuracy and efficiencies.

Flexible Routing

Link sequences in sequential, overlapping and parallel routes for more efficient use of resources.

Reusable Sequences

Reuse sequences within a route for repeat steps in the manufacturing process and help to save time and reduce costs.

In-Depth Sequence Control

Control sequences for tight alignment with production processes. For example, designate a sequence as the last to run in a day, such as a painting step that requires overnight drying before taking the next routing step.

Elimination of Duplicate Effort

Eliminate duplicate effort in setting up or changing routes by reusing sequences from routes, or by copying and modifying as necessary.

On-Time Routing of Materials

Help ensure that materials are where they are needed, when they are needed (and not before), by linking components from bills of materials to specific sequences.

Work Center Management

Powerful Outsourcing Management

Manage outsourced work centers efficiently. All MOs and related purchase orders can be viewed for status and outsourcing vendors can be added or changed as needed to avoid delays or other problems at any time in the manufacturing process.

Detailed Resource Allocation

Assign machines and employees to each work center to take advantage of effective capacity and availability. Alternate work centers are assigned efficiently to counteract bottlenecks when they occur.

Tight Schedule Control

Track shifts and the hours-per-shift at each work center to accommodate various work center schedules.

Consolidated Operations

Easily group operations for more efficient, cellular environments.

Automated Backflushing

Set operations to backflush labor and/or machine expenses automatically.

[FEATURES OVERVIEW]

Machine Definition

Fast Tracking of Asset Information

Provide instant access to machine repair and maintenance information, including installation date, serial number, machine location, and warranty. Maintenance procedures and detailed notes are attached to each machine, improving Asset Maintenance procedures and shortening the learning curve for employees new to a piece of equipment.

Costing

Detailed Tracking of Multiple Cost Factors

Track nine different cost categories:

- Material
- Fixed Material Overhead
- Variable Material Overhead
- Machine
- Fixed Machine Overhead
- Variable Machine Overhead
- Labor
- Fixed Labor Overhead
- Variable Labor Overhead
- Outsourcing—You can use any of the above cost categories to capture outsourcing costs.

Flexible Cost Basing

Base costing on actual or standard costs.

Improved Product Costing

Automatically apply WIP materials to a receipt, calculate labor costs, and add completed product into stock for better visibility into product costs.

Better Visibility of Cost Effects

As new standard costs are defined for components or services, you can track bills of materials to see their effects on cost of finished goods. Changes can be applied systemically or to a single bill of material.

Standard Cost Changes History

Provide a complete view of Standard Cost revaluations with automated recording of changes and the ability to generate historical reports.